

# GLOW PEEL ELIXIR

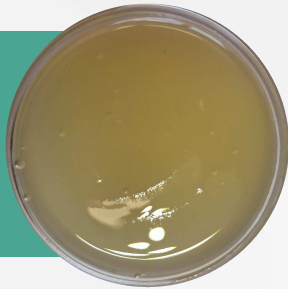
OIL PEELING SERUM

013/24\_01



FACE

BR2024INCOS



## OVERVIEW

This peeling serum is based on natural ingredients to gently exfoliate and revitalize the complexion. The association of Sunflower Oil and Caprylic/Capric Triglyceride was used as a base for the serum. Its texture is thickened through Thixcin® R CP. An exotic blend of emollients, such as Monoi de Tahiti AO, Citrofol® Al Extra and Tamanu Oil, known for their hydrating and soothing properties, leaves the skin feeling nourished and pampered. The peeling activity of this serum is based on Siliphos® while Durosoft PG4-O enables an easy rinse-off of the serum, leaving the skin radiant and pampered.

Phase	Trade Name	Supplier	European I.N.C.I. Name	Function	%
A	Sunflower Oil	SARFAM*	Helianthus Annuus Seed Oil	Emollient	48,70
	Caprylic/Capric Triglyceride		Caprylic/Capric Triglyceride		3,00
	Thixcin® R PC	ELEMENTIS*	Trihydroxystearin	Oil thickener	2,00
B	Citrofol® Al Extra	JUNGBUNZLAUER*	Triethyl Citrate	Emollient	20,00
	Monoi De Tahiti AO	PACIFIQUE SUD*	Cocos Nucifera Oil, Gardenia Tahitensis Flower, Tocopherol		3,00
	Tamanu oil		Caloophyllum Inophyllum Oil, Tocopherol		0,50
C	Virgin Apricot Kernel Oil	OLVEA*	Prunus Armeniaca Kernel Oil	Active	20,00
	Siliphos®	GIVAUDAN*	Lecithin, Silybin		0,30
	Durosoft PG4-O	STEPHENSON*	Polyglyceryl-4 Oleate	Emulsifier	2,50

\* Please contact us to know in which country we are supplier of

## PROCESS



**PHASE A :** Disperse Thixcin® R PC in Caprylic/Capric Triglyceride and add to Sunflower Oil under constant high agitation for 20 minutes at 55-65°C.  
**PHASE B :** Add the items from phase B and mix well after each addition.  
**PHASE C :** Add the pre-homogenized phase C items and mix well.

## PROPERTIES



**APPEARANCE :** Slightly viscous yellowish serum.

**VISCOSITY :** 1500 - 3500 cPs (Brookfield RVDV-I+, 20 rpm, 1 min, spindle 4).

**pH :** N/A.